



# touchREVIEWS in Endocrinology

VOLUME 20 • ISSUE 2 • 2024

EDITOR-IN-CHIEF: JOHN DOUPIS

**The International Evidence-based Guidelines for the Assessment and Management of Polycystic Ovary Syndrome: An Exemplar of Person-centred Care**

Bharti Kalra, Nitin Kapoor, Atul Dhingra and Sanjay Kalra

**Metformin Use and Vitamin B12 Deficiency in People with Type 2 Diabetes. What Are the Risk Factors? A Mini-systematic Review**

Michael Atkinson, Prashamsa Gharti and Thinzar Min

**Metabolic Dysfunction-associated Steatotic Liver Disease and Type 2 Diabetes: A Deadly Synergy**

Damien Leith, Yeun Yi Lin and Paul Brennan

**New Trends in Treating Cushing's Disease**

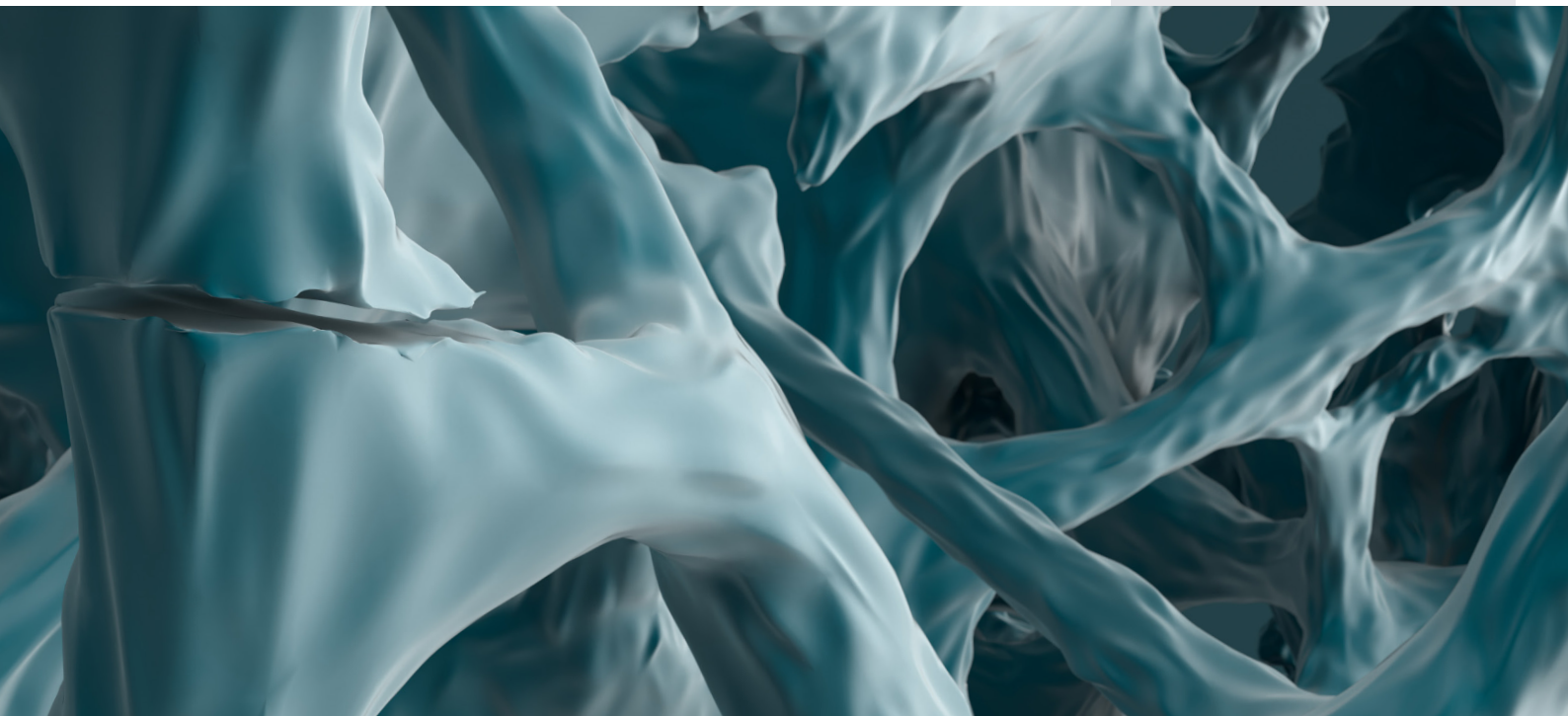
Odyseas Violetis and Krystallenia I Alexandraki

[www.touchENDOCRINOLOGY.com](http://www.touchENDOCRINOLOGY.com)

# touchREVIEWS in Endocrinology

Volume 20 • Issue 2 • 2024

Cover image: Fracture bones in osteoporosis - isometric left view 3d illustration  
By LASZLO | © stock.adobe.com



touchREVIEWS in Endocrinology wishes to thank the organizations below for their assistance. This does not constitute any official endorsement.



**Senior Editorial Director**  
Gina Furnival

**Editorial Directors**  
Katey Gabrysch  
Carla Junkier  
Sophie Nickelson

**Editorial Workflow**  
Heather Hall

**Head Medical & Editorial**  
Nicola Cartridge  
E: nicola.cartridge@touchmedicalmedia.com  
T: +44 (0)20 7193 3186

**CEO & Managing Director**  
Barney Kent  
E: barney.kent@touchmedicalmedia.com  
T: +44 (0)20 7193 3009

**Head of Strategic Partnerships**  
Caroline Markham  
E: caroline.markham@touchmedicalmedia.com  
T: +44 (0)20 7193 3704

All information obtained by Touch Medical Media and each of the contributors from various sources is as current and accurate as possible. However, due to human or mechanical errors, Touch Medical Media and the contributors cannot guarantee the accuracy, adequacy or completeness of any information, and cannot be held responsible for any errors or omissions, or for the results obtained from the use thereof. Where opinion is expressed, it is that of the authors and does not necessarily coincide with the editorial views of Touch Medical Media. Statistical and financial data in this publication have been compiled on the basis of factual information and do not constitute any investment advertisement or investment advice. For the avoidance of doubt, the information contained in this publication is intended for use by licensed medical professionals. The content should not be considered medical advice, diagnosis or treatment recommendations.

© 2024 Touch Medical Media Group Holdings Ltd, is a private limited company registered in England and Wales at Lancashire Gate, 21 Tiviot Dale, Stockport, Cheshire, SK1 1TD, UK, with registered number 08197142.  
All rights reserved.

eISSN: 2752-5457



www.touchmedicalmedia.com



# touchREVIEWS

## in Endocrinology

### Editor-in-Chief

**John Doupis**

Director, Diabetes Division, Iatriko Palaiou Fallirou Medical Center and Internal Medicine and Diabetes Department, NS Naval Hospital, Athens, Greece

### Section Editors

**Glenn D Braunstein (endocrine oncology)**

Chairman, Cedars-Sinai Medical Center, Los Angeles CA, USA

**George P Chrousos (paediatric endocrinology)**

Professor and Chairman, First Department of Pediatrics, Director, Division of Endocrinology, Metabolism and Diabetes, University of Athens Medical School, Children's Hospital Aghia Sophia, Athens, Greece

**Hossein Gharib (thyroid)**

Professor of Medicine, Mayo Clinic College of Medicine, USA

**Neil Gittoes (bone disorders)**

Head, Centre for Endocrinology, Diabetes and Metabolism, University Hospitals Birmingham and University of Birmingham, Birmingham, UK

**Ashley Grossman (pituitary disorders/ neuroendocrine)**

Professor of Endocrinology, OCDEM, University of Oxford, Oxford, UK

**Chantal Mathieu (diabetes)**

Professor of Medicine, Catholic University of Leuven, Leuven, Belgium

**Alexander Miras (obesity)**

Senior Clinical Lecturer and Consultant in Endocrinology at Imperial College London, London, UK

**Joseph Pappachan (adrenal disorders)**

Clinical lead for research & innovation in Endocrinology & Metabolism at Lancashire Teaching Hospitals NHS Trust (LHTR) Clinical Chair to Diabetic Foot & Musculoskeletal Metabolic Research at Manchester Metropolitan University, UK

### Editorial Board

**Martin Abrahamson**

Medical Director, Joslin Clinic and Associate Professor of Medicine, Harvard Medical School, Boston, MA, USA

**Kristi Alexandraki**

Consultant, Research Fellow, National and Kapodistrian University of Athens, Athens, Greece

**Sarah Ali**

Consultant, Diabetes and General Medicine, Royal Free London NHS Foundation Trust, London, UK

**Steve Bain**

Assistant Medical Director for Research & Development for Swansea Bay University Health Board; Clinical Director of the Diabetes Research Unit in Swansea University, Swansea, UK

**Saptarshi Bhattacharya**

Senior Consultant Endocrinology, Indraprastha Apollo Hospitals, Sarita Vihar & Director, eDEC, Delhi, India

**Bruce W Bode**

Diabetes Specialist, Atlanta Diabetes Associates, Atlanta, GA, USA

**Paul Brennan**

Clinical Lecturer and Assistant Professor, University of Dundee, Dundee, UK

**Pauline M Camacho**

Associate Professor of Medicine and Director, Loyola University Osteoporosis and Metabolic Bone Disease Center, Maywood, IL, USA

**Francesco Chiarelli**

Professor of Paediatrics, D'Annunzio University of Chieti-Pescara, Chieti, Italy

**George P Chrousos**

Professor and Chairman, First Department of Pediatrics, University of Athens Medical School, Athens, Greece

**Ides Colin**

Endocrino-Diabetologist, Department of Internal Medicine, Centre Hospitalier Régional (CHR) Mons-Hainaut/Groupe Jolimont, Mons, Belgium

**Sam Dagogo-Jack**

Professor of Medicine, University of Tennessee Health Science Center, Memphis, TN, USA

**Luis D'Marco**

Nephrologist & Clinical researcher, Cardenal Herrera University, Valencia, Spain

**Terry F Davies**

Professor of Medicine, Mount Sinai School of Medicine, New York City, NY, USA

**Stephen N Davis**

Professor, Chair of Medicine, University of Maryland Medical Center, Baltimore, MD, USA

**Deep Dutta**

Senior Endocrinologist, CEDAR Super-specialty Clinics, New Delhi, India

**Ulla Feldt-Rasmussen**

Professor, Centre of Cancer and Organ Diseases, University of Copenhagen, Copenhagen, Denmark

**Angus Forbes**

Professor of Diabetes Nursing and Chair, Foundation of European Nurses in Diabetes (FEND), King's College London, London, UK

**Andrea R Genazzani**

Professor and Director, University of Pisa, Pisa, Italy

**Francesco Giorgino**

Professor of Endocrinology; Director, Department of Precision and Regenerative Medicine and Ionian Area; Head, Section of Internal Medicine, Endocrinology, Andrology and Metabolic Diseases, University of Bari Aldo Moro; Chief, Division of Endocrinology, University Hospital Policlinico Consorziale, Bari, Italy

**Osama Hamdy**

Medical Director, Joslin Obesity Clinical Program, Joslin Diabetes Center, Harvard Medical School, Boston, MA, USA

**Anna-Lena Hulting**

Professor, Endocrinology, Metabolism and Diabetology, Karolinska University Hospital, Solna, Sweden

**Sanjay Kalra**

Executive Editor, JoSH Diabetes, Bharti Hospital, Karnal, India

**Laurence Katznelson**

Professor of Neurosurgery and Medicine, Stanford University School of Medicine, Stanford, CA, USA

**Robert Knutson**

President and CEO, Pituitary Network Association (PNA), Thousand Oaks, CA, USA

**Stephen LaFranchi**

Professor, Oregon Health and Science University, Portland, OR, USA

**Harold E Lebovitz**

Professor of Medicine, The State University of New York Health Science Center, New York, NY, USA

**Neely Mozawala**

Diabetes Specialist Podiatrist, London, UK

**Steven Nissen**

Chief Academic Officer, Heart, Vascular and Thoracic Institute, Cleveland Clinic; Professor of Medicine, Cleveland Clinic Lerner School of Medicine, Case Western Reserve University, Cleveland, OH, USA

**Furio Pacini**

Professor of Endocrinology, University of Siena, Siena, Italy

**Elizabeth Pearce**

Professor of Medicine, Boston University School of Medicine, Boston, MA, USA

**Rodolfo Rey**

Director, Centro de Investigaciones Endocrinológicas "Dr. César Bergadá" (CEDIE), CONICET - FEI - División de Endocrinología, Hospital de Niños Ricardo Gutiérrez, Buenos Aires, Argentina

**Donna Ryan**

President, American Association of Diabetes Educators, Chicago, IL, USA

**Linda Siminerio**

Executive Director, University of Pittsburgh Diabetes Institute, Pittsburgh, PA, USA

**Tommaso Simoncini**

Professor of Obstetrics and Gynaecology, University of Pisa, Pisa, Italy

**Solomon Tesfaye**

Consultant Physician and Honorary Professor of Diabetic Medicine, University of Sheffield, Sheffield, UK

**Peter Trainer**

Professor of Endocrinology, University of Manchester, Manchester, UK

**Elena Varlamov**

Assistant Professor, Oregon Health and Science University, Portland, OR, USA

**Virginia Valentine**

Sage Specialty Care for Diabetes and Endocrine, Albuquerque, NM, USA

# touchREVIEWS in Endocrinology

Established: December 2005 Frequency: Bi-annual  
Current edition: Volume 20 Issue 2, 2024

## Aims and scope

- *touchREVIEWS in Endocrinology* enables time-pressured physicians to stay abreast of major advances and opinions in endocrine practice.
- *touchREVIEWS in Endocrinology* comprises balanced and comprehensive articles, addressing the most important and salient developments in the endocrinology field.
- *touchREVIEWS in Endocrinology* endeavours to support physicians, clinicians and related healthcare professionals in continuously developing their knowledge, effectiveness and productivity. The editorial policy has been designed to encourage discussion among this peer group.
- Comprehensive bibliographies for each article mean that *touchREVIEWS in Endocrinology* is an informative and valuable reference tool for use throughout the year.
- All articles are subject to peer review, and must adhere to the ICMJE, GPP 2022, and COPE guidelines.

## Structure and format

- *touchREVIEWS in Endocrinology* is a peer-reviewed, free-to-access, bi-annual journal comprising review articles, original research, case reports, editorials, expert interviews and practice pearls.
- The structure of each edition of the publication comprises section categories determined by the Editor. The degree of coverage assigned to each category is the decision of the Editor, and in part reflects the views of the Editorial Board.
- All articles disclose any author financial and non-financial relationships and activities, along with any funding, financial support and medical writing assistance.
- Each edition of *touchREVIEWS in Endocrinology* is published in full online at [www.touchENDOCRINOLOGY.com](http://www.touchENDOCRINOLOGY.com)

## Editorial expertise

*touchREVIEWS in Endocrinology* is supported by various levels of expertise.

- Guidance from an Editorial Board consisting of leading authorities from a variety of endocrine disciplines.
- Invited contributors who are recognized authorities from their respective fields.
- Peer review: conducted by experts appointed for their experience and knowledge of a specific topic.
- An experienced team of Editors and Technical Editors.

## Peer review

- On submission, all articles are assessed by the Editor to determine their suitability for inclusion and appropriateness for peer review.
- The Editor identifies appropriate reviewers, who are selected on the basis of their specialist knowledge in the relevant area, following consultation with a member of the Editorial Board where necessary.
- We aim to have the final peer review decision within 4 weeks.
- Following review, papers are either accepted without modification, returned to the author(s) to incorporate required changes or not accepted for publication.

- The Editor reserves the right to accept or reject any proposed amendments on the advice of the Editorial Board and reviewers.

## Submissions and instructions for authors

- The Editor commissions articles with guidance from the Editorial Board and unsolicited articles are welcomed.
- The Editor is always keen to hear from authors wishing to discuss potential submissions, and will give due consideration to any proposals. Please contact the Editor for further details: [editorialmanager@touchmedicalmedia.com](mailto:editorialmanager@touchmedicalmedia.com)
- Instructions for authors are available from the website [www.touchENDOCRINOLOGY.com](http://www.touchENDOCRINOLOGY.com)

## Distribution and readership

*touchREVIEWS in Endocrinology* is distributed globally, on a bi-annual basis, through controlled circulation to healthcare and pharmaceutical professionals in the field.

## Abstracting and indexing

*touchREVIEWS in Endocrinology* (formerly *EU Endocrinology*) is abstracted, indexed and listed in PubMed Central, Embase, EBSCO, Genamics JournalSeek, Google Scholar and IndexCopernicus.

## Copyright

Authors transfer copyright of their article to Touch Medical Media, who publish the article as free-to-access to registered users.

## Free-to-access

All articles are free-to-access, which allows anyone in the endocrinology field to download published articles free of charge.

## Online resources


[www.touchmedicalmedia.com](http://www.touchmedicalmedia.com) provides clinicians and other industry professionals with free resources spanning nine therapy areas including cardiology, endocrinology, haematology, immunology, infectious diseases, neurology, oncology, ophthalmology, and respiratory and pulmonary diseases.

## Society partners

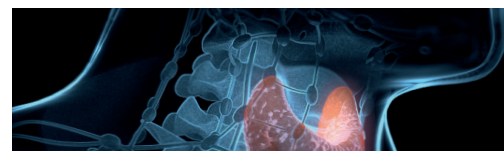
[touchENDOCRINOLOGY.com](http://touchENDOCRINOLOGY.com) has developed very valuable society partnerships with the most respected not-for-profit medical societies internationally.

These partnerships are key as [touchENDOCRINOLOGY.com](http://touchENDOCRINOLOGY.com) helps to promote awareness of these medical societies while also providing free-to-access, peer-reviewed articles and multimedia content to the society members, which ensures that the industry is kept up-to-date with the latest cutting-edge content and opinion from world-renowned doctors.

## About Touch Medical Media

Touch Medical Media publishes a rich and diverse portfolio of free-to-access, peer-reviewed journals across the clinical and pharmaceutical arenas. Touch Medical Media aims to assist in the education and practice of healthcare and pharmaceutical professionals. 





## Foreword

### 1 Foreword

**John Doupis**

*Director, Diabetes Division, Iatriko Palaioi Falirou Medical Center and Internal Medicine and Diabetes Department, NS Naval Hospital, Athens, Greece*

## Commentary

### Reproductive Endocrinology

### 2 The International Evidence-based Guidelines for the Assessment and Management of Polycystic Ovary Syndrome: An Exemplar of Person-centred Care

**Bharti Kalra,<sup>1</sup> Nitin Kapoor,<sup>2,3</sup> Atul Dhingra<sup>4</sup> and Sanjay Kalra<sup>5,6</sup>**

*1. Department of Obstetrics and Gynaecology, Bharti Hospital, Karnal, Haryana, India; 2. Department of Endocrinology, Diabetes and Metabolism, Christian Medical College, Vellore, Tamil Nadu, India; 3. Non-Communicable Disease Unit, Baker Heart and Diabetes Institute, Melbourne, Victoria, Australia; 4. Department of Endocrinology, Sir Gangaram Bansal Hospital, Sri Ganganagar, Rajasthan, India; 5. Department of Endocrinology, Bharti Hospital, Karnal, Haryana, India; 6. University Center for Research & Development, Chandigarh University, Mohali, Punjab, India*

## Editorial

### Diabetes

### 5 Metabolic Dysfunction-associated Steatotic Liver Disease and Type 2 Diabetes: A Deadly Synergy

**Damien Leith, Yeun Yi Lin and Paul Brennan**

*Clinical Research Centre, Ninewells Hospital, Dundee, UK*

### Pituitary Disorders

### 10 New Trends in Treating Cushing's Disease

**Odysseas Violetis and Krystallenia I Alexandraki**

*2nd Department of Surgery, Aretaieio Hospital, National and Kapodistrian University of Athens, Athens, Greece*

### Reproductive Endocrinology

### 16 The Approach to Patients with Disorders of Sex Development (DSD) in the Era of Precision Medicine: The Careful Use of Terminology

**Rodolfo A Rey**

*Centro de Investigaciones Endocrinológicas "Dr. César Bergadá" (CEDIE), CONICET – FEI – División de Endocrinología, Hospital de Niños Ricardo Gutiérrez, Buenos Aires, Argentina*

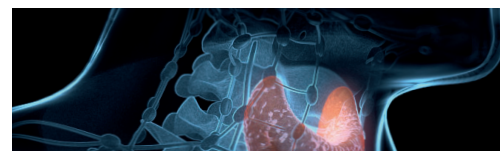
## Reviews

### Diabetes

### 19 New Insights into the Pleiotropic Actions of Dipeptidyl Peptidase-4 Inhibitors Beyond Glycaemic Control

**Safwat A Mangoura,<sup>1,2</sup> Marwa A Ahmed<sup>2</sup> and Andrew Z Zaka<sup>2</sup>**

*1. Department of Pharmacology and Toxicology, Faculty of Pharmacy, Badr University in Cairo (BUC), Badr, Cairo, Egypt; 2. Department of Medical Pharmacology, Faculty of Medicine, Assiut University, Assiut, Egypt*



## 30 **Dry Eye in Diabetes: The Indian Diabetic and Endocrine Eye Diseases (INDEED) Review**

**Sanjay Kalra,<sup>1</sup> Nikhil Sharad Gokhale,<sup>2</sup> Ganapathi Bantwal,<sup>3</sup> Roopashri Matada,<sup>4</sup> Shehla Shaikh,<sup>5</sup> Varsha Pawar,<sup>6</sup> Maneesha Khalse<sup>6</sup> and Kamlesh Patel<sup>7</sup>**

1. Department of Endocrinology, Bharti Hospital, Karnal, Haryana, India; 2. Gokhale Eye Hospital, Mumbai, India; 3. Department of Endocrinology, St. Johns Medical College, Bangalore, Karnataka, India; 4. Department of Ophthalmology, J.J.M Medical College, Davangere, Karnataka, India; 5. Saifee Hospital, Mumbai, Maharashtra, India; 6. Medical Affairs Division, Lupin Ltd., Mumbai, Maharashtra, India; 7. Medical and Health Tech, Lupin Ltd., Mumbai, Maharashtra, India

## 42 **Metformin Use and Vitamin B12 Deficiency in People with Type 2 Diabetes. What Are the Risk Factors? A Mini-systematic Review**

**Michael Atkinson,<sup>1</sup> Prashamsa Gharti<sup>2</sup> and Thinzar Min<sup>2,3</sup>**

1. Department of Diabetes and Endocrinology, Morrilton Hospital, Swansea Bay University Health Board, Swansea, UK; 2. Diabetes Research Group, Swansea University Medical School, Swansea, UK; 3. Department of Diabetes and Endocrinology, Neath Port Talbot Hospital, Swansea Bay University Health Board, Swansea, UK

### Liver Disorders

## 54 **Role of Obeticholic Acid, a Farnesoid X Receptor Agonist, in Nonalcoholic Fatty Liver Disease: A Systematic Review and Meta-analysis**

**ABM Kamrul-Hasan,<sup>1</sup> Sunetra Mondal,<sup>2</sup> Lakshmi Nagendra,<sup>3</sup> Thanikai Sasikanth,<sup>4</sup> Afsar Ahammed,<sup>5</sup> Shahin Ibn Rahman,<sup>6</sup> Ashani Wickramarachchi,<sup>7</sup> Naresh Parajuli,<sup>8</sup> Saurav Khatiwada<sup>9</sup> and Deep Dutta<sup>10</sup>**

1. Department of Endocrinology, Mymensingh Medical College, Mymensingh, Bangladesh; 2. Department of Endocrinology, NRS Medical College, Kolkata, India; 3. Department of Endocrinology, JSS Medical College, JSS Academy of Higher Education and Research, Mysore, India; 4. Department of Endocrinology, National Hospital of Sri Lanka, Colombo, Sri Lanka; 5. Department of Endocrinology, National Institute of Traumatology & Orthopaedic Rehabilitation, Dhaka, Bangladesh; 6. Department of Endocrinology, BIRDEM General Hospital, Shahbag, Dhaka, Bangladesh; 7. Department of Endocrinology, University Medical Unit, National Hospital of Sri Lanka, Colombo, Sri Lanka; 8. Department of Medicine, Endocrine Unit, Tribhuvan University Institute of Medicine, Kathmandu, Nepal; 9. Department of Medicine, Endocrine Unit, Chitwan Medical College, Bharatpur, Chitwan, Nepal; 10. Department of Endocrinology, CEDAR Superspeciality Healthcare, Dwarka, New Delhi, India

### Obesity

## 62 **Setmelanotide: A Melanocortin-4 Receptor Agonist for the Treatment of Severe Obesity Due to Hypothalamic Dysfunction**

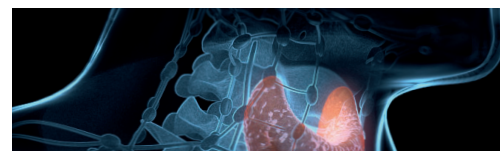
**Sulmaaz Qamar,<sup>1,2,3</sup> Ritwika Mallik<sup>1,2,3</sup> and Janine Makaronidis<sup>1,2,3,4</sup>**

1. Centre for Obesity Research, Rayne Institute, Department of Medicine, University College London, London, UK; 2. UCLH Bariatric Centre for Weight Management and Metabolic Surgery, University College London Hospital, London, UK; 3. National Institute of Health Research, UCLH Biomedical Research Centre, London, UK; 4. Department of Diabetes and Metabolism, Barts Health NHS Trust, London, UK

## 72 **Efficacy and Safety of Novel Twincretin Tirzepatide, a Dual GIP/GLP-1 Receptor Agonist, as an Antiobesity Medicine in Individuals Without Diabetes: A Systematic Review and Meta-analysis**

**Deep Dutta,<sup>1</sup> ABM Kamrul-Hasan,<sup>2</sup> Lakshmi Nagendra<sup>3</sup> and Saptarshi Bhattacharya<sup>4</sup>**

1. Department of Endocrinology, CEDAR Superspeciality Healthcare, Dwarka, New Delhi, India; 2. Department of Endocrinology, Mymensingh Medical College, Mymensingh, Bangladesh; 3. Department of Endocrinology, JSS Medical College, JSS Academy of Higher Education and Research, Mysore, India; 4. Department of Endocrinology, Indraprastha Apollo Hospitals, New Delhi, India



## Thyroid Disorders

### 81 The Horizon of Thyroid Imaging Reporting and Data System in the Diagnostic Performance of Thyroid Nodules: Clinical Application and Future Perspectives

Seyedeh Niloofar Sharafi,<sup>1</sup> Mohammad Moarefzadeh<sup>2</sup> and Milad Tari Moradi<sup>3</sup>

1. Nottingham University Hospital NHS Trust, Nottingham, UK; 2. Lorestan University of Medical Sciences, Lorestan, Iran; 3. Qazvin University of Medical Sciences, Qazvin, Iran

### 91 Prevalence and Risk Factors of Heart Failure in Patients Diagnosed with Hyperthyroidism: A Systematic Review and Meta-analysis

Si Wei David Fan and Leong Tung Ong

Faculty of Medicine, University of Malaya, Kuala Lumpur, Malaysia

### 100 Teprotumumab's Impact on Proptosis in Long-duration Thyroid Eye Disease: A Systematic Review and Meta-analysis

Nicholas A Householder<sup>1</sup> and Coby Ray<sup>2</sup>

1. School of Medicine, Lubbock Campus, Texas Tech University Health Sciences Center Lubbock, TX, USA; 2. Ophthalmology, School of Medicine, Lubbock Campus, Texas Tech University Health Sciences Center

## Original Research

### Diabetes

### 110 Use of Automated Insulin Delivery in Pregnancies Complicated by Type 1 Diabetes

Mahima Chillakanti,<sup>1,2</sup> Elaine Young,<sup>1</sup> April Hopcroft,<sup>3</sup> Natalie Bellini,<sup>4</sup> Jennifer Smith<sup>5</sup> and Diana Isaacs<sup>6</sup>

1. Close Concerns, San Francisco, CA, USA; 2. David Geffen School of Medicine at UCLA, Los Angeles, CA, USA; 3. The diaTribe Foundation, San Francisco, CA, USA; 4. University Hospitals, Cleveland, OH, USA; 5. Integrated Diabetes Services, Wynnwood, PA, USA; 6. Cleveland Clinic, Cleveland, OH, USA

### Thyroid Disorders

### 119 Clinical and Biochemical Profiles of Hospitalized Patients with Hypercalcaemia from a Tertiary Care Centre in North India

Aman Kumar,<sup>1</sup> Deepak Khandelwal,<sup>2</sup> Lovely Gupta,<sup>3</sup> Upasana Agrawal,<sup>4</sup> Suresh Mittal,<sup>1</sup> Vivek Aggarwal,<sup>5</sup> Nishikant Avinash Damle,<sup>6</sup> Monika Garg,<sup>7</sup> Deep Dutta<sup>8</sup> and Sanjay Kalra<sup>9</sup>

1. Department of Medicine, Maharaja Agrasen Hospital, Punjabi Bagh, New Delhi, India; 2. Department of Endocrinology & Diabetes, Khandelwal Diabetes, Thyroid & Endocrinology Clinic, Paschim Vihar, New Delhi, India; 3. Department of Research, Sitaram Bhartiya Institute of Science and Research, Qutab Institutional Area, New Delhi, India; 4. Department of Internal Medicine, LSU Health Sciences Center, Shreveport, LA, USA; 5. Department of Endocrine Surgery, Maharaja Agrasen Hospital, Punjabi Bagh, New Delhi, India; 6. Department of Nuclear Medicine, All India Institute of Medical Sciences (AIIMS), New Delhi, India; 7. Department of Radiology, Maharaja Agrasen Hospital, Punjabi Bagh, New Delhi, India; 8. Department of Endocrinology, Center for Endocrinology Diabetes Arthritis & Rheumatism (CEDAR) Superspeciality Clinics, Dwarka, New Delhi, India; 9. Department of Endocrinology, Bharti Hospital & BRIDE, Karnal, India

## Case Report

### Thyroid Disorders

### 124 Amyloid Goiter: A Peruvian Case Series

José Paz-Ibarra,<sup>1,2,3</sup> Marcio Concepción-Zavaleta,<sup>4</sup> Juan Eduardo Quiroz-Aldave,<sup>5</sup> José Somocurcio-Peralta,<sup>1,6</sup> María Belén Tite Haro<sup>3,7</sup> and Paola Solis-Pazmino<sup>3,8</sup>

1. Department of Medicine, School of Medicine, Universidad Nacional Mayor de San Marcos, Lima, Peru; 2. Division of Endocrinology, Hospital Nacional Edgardo Rebagliati Martins, Lima, Peru; 3. CaTaLiNA: Cancer de tiroides en Latinoamérica, Quito, Ecuador; 4. Universidad Científica del Sur, Lima, Peru; 5. Division of Non-communicable diseases, Endocrinology research line, Hospital de Apoyo Chepén, Chepén, Perú; 6. Department of Pathological Anatomy, Hospital Nacional Edgardo Rebagliati Martins, Lima, Peru; 7. Universidad San Francisco de Quito, Quito, Ecuador; 8. Surgery Department, Santa Casa de Misericórdia in Porto Alegre, Porto Alegre, Brazil