

## Sustained-release Naltrexone/Bupropion— A Novel Pharmacologic Approach to Obesity and Food Craving

Ken Fujioka, MD

Director, Nutrition and Metabolic Research and Director, Weight Management, Scripps Clinic, San Diego, California, US

### Abstract

Long-term pharmacologic strategies that may be used in conjunction with lifestyle changes to address the obesity epidemic have, until recently, been an unmet clinical need. Interestingly, pharmacologic interventions to date have not specifically focused on modifying the behavioral aspects of eating. Food intake is influenced by multiple pathways, including the homeostatic regulation of energy balance controlled by the hypothalamus and the mesolimbic reward system, dysregulation of which can lead to reward eating, food craving, and overconsumption of food. A growing body of evidence suggests that targeting the reward system can be a successful intervention for obesity management. Sustained-release naltrexone/bupropion is a novel combination therapy that targets both the hypothalamic melanocortin system and the reward system. In clinical trials, naltrexone/bupropion has been associated with sustained and clinically meaningful weight loss together with beneficial effects on eating behavior and improvements in cardiometabolic factors. Craving and control of food intake were also measured and correlated with improved outcome.

### Keywords

Obesity, bupropion, naltrexone, feeding behavior, craving, reward, weight loss

**Disclosure:** Ken Fujioka, MD, is a member of the Orexigen Therapeutics, Inc. Advisory Board and is a consultant for Orexigen Therapeutics, Inc.

**Open Access:** This article is published under the Creative Commons Attribution Noncommercial License, which permits any noncommercial use, distribution, adaptation, and reproduction provided the original author(s) and source are given appropriate credit.

**Acknowledgment:** Editorial assistance was provided by Katrina Mountfort, PhD, at Touch Medical Media.

**Received:** April 30, 2014 **Accepted:** May 20, 2014 **Citation:** *US Endocrinology*, 2014;10(1):53–8 DOI: 10.17925/USE.2014.10.01.53

**Correspondence:** Ken Fujioka, MD, Scripps Clinic Del Mar, 12395 El Camino Real, Ste 317, San Diego, CA 92130, US. E: Fujioka.Ken@scrippshealth.org

**Support:** The publication of this article was supported by Orexigen Therapeutics Inc. and Takeda Pharmaceuticals. The views and opinions expressed are those of the author and not necessarily those of Orexigen Therapeutics Inc. and Takeda Pharmaceuticals.

Sustained-release Naltrexone/Bupropion is approved in Europe as Mysimba™

The growing prevalence of obesity is a global health concern. In 2009 to 2010, more than one-third of adults and 17 % of youth in the US were obese, as defined by body mass index (BMI). Obesity is associated with numerous health risks such as hypertension,<sup>1</sup> cardiovascular disease (CVD),<sup>2</sup> diabetes,<sup>3,4</sup> stroke,<sup>5</sup> and various cancers.<sup>6</sup> Obesity also has a considerable impact on health-related quality of life (QoL).<sup>7</sup> Of greatest concern is the early onset of obesity compared with previous generations. This has led to a predicted growth in the proportion of the population living with obesity-related diseases and chronic disabilities, which may reverse the trend toward increased life expectancy achieved during the past century.<sup>8</sup> The economic costs of these obese populations living with chronic diseases will be dramatically higher than the normal-weight population.<sup>9,10</sup> Clinical evidence suggests that weight reduction can improve outcomes in obese patients. Modest weight loss (2.6–4.9 kg) is associated with improvements in weight-related comorbidities.<sup>11–13</sup> Higher levels of weight loss have been associated with greater benefits.<sup>14</sup> While any intervention to combat obesity should focus on lifestyle interventions, in particular increasing physical activity, health care systems could achieve substantial cost savings through supplementing such interventions with anti-obesity medications that promote weight loss.

A growing consensus agrees that the main factors underlying the obesity epidemic are a rise in urbanization and globalization, which have led to substantial changes in the number and types of food-related cues, food availability and portion sizes, the availability of food at all hours of the day, and sophisticated marketing techniques. In the past it was believed that obesity prevention and treatment was a matter of self-control. This would imply that society has collectively lost its self-control in the last 30 years, in parallel with the rise in obesity, and that North Americans, in whom obesity levels are highest, have reduced self-control. However, this seems an unlikely explanation. The increase in obesity is seen across all socioeconomic groups, including those with high levels of education enabling the ability to make informed choices.<sup>15</sup> The neurophysiologic mechanisms influencing food intake may therefore be operating below the level of individual awareness.<sup>16</sup>

The field of obesity medicine is changing rapidly and health care professionals have multiple weight loss medications to choose from, with more under development. It will become important to understand how each medication affects food intake and eventual weight management. This article will discuss the multiple neurophysiologic pathways underlying obesity, and describe a new pharmacologic

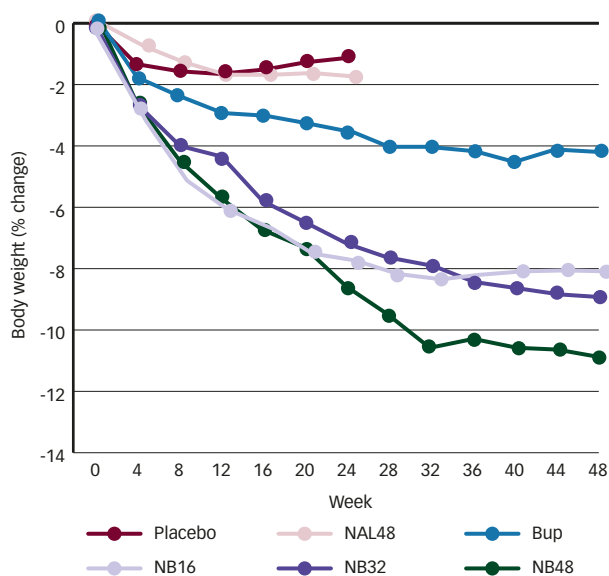


**Table 1: Summary of Phase III Clinical Trial Data Investigating the Efficacy and Safety of Sustained-release Naltrexone/Bupropion—Effect on Weight Loss in Study Completers**

Trial	Trial Design	Effect on Weight Loss in Completer Population	Reference
COR-I	n=1,742, 56 weeks	Mean weight loss 8.1 % versus 1.8 % placebo; ≥5 % weight loss in 62 % versus 23 %; ≥10 % weight loss in 34 % versus 11 %	58
COR-II	n=1,496, 56 weeks	Mean weight loss 8.2 % versus 1.4 % placebo; ≥5 % weight loss in 65 % versus 22 %; ≥10 % weight loss in 39 % versus 8 %	60
COR-BMOD	n=793, 56 weeks, included intensive lifestyle modification for both treatment groups	Mean weight loss 11.5 % versus 7.3 % placebo; ≥5 % weight loss in 80 % versus 60 %; ≥10 % weight loss in 55 % versus 30 %	59
COR-DM	n=505, 56 weeks, type 2 diabetes	Mean weight loss 5.9 % versus 2.2 % placebo; ≥5 % weight loss in 53 % versus 24 %; ≥10 % weight loss in 26 % versus 8 %	61

COR = Contrave Obesity Research; COR-BMOD = Contrave Obesity Research-Behavioral Modification; COR-DM = Contrave Obesity Research-Diabetes Mellitus.

**Figure 2: Percent Change in Body Weight in Completers—Phase II Study of Naltrexone/Bupropion**



Source: Greenway et al., 2009.<sup>57</sup>

**Sustained-release Naltrexone/Bupropion—A Novel Pharmacologic Approach to the Treatment of Food Craving and Obesity History of Use and Mechanism of Action**

Combination therapies are an attractive option for pathologic states resulting from multiple regulatory mechanisms. The combination of naltrexone and bupropion (NB) in a sustained-release formulation is a novel therapeutic approach to obesity, whose effects may in part be mediated by a unique effect on reward pathways, resulting in sustained appetite reduction and enhanced control of eating behavior.<sup>43</sup> The individual components of NB have been used independently for decades to treat a variety of disorders. Naltrexone is an opioid antagonist that has been used clinically in the treatment of opioid and alcohol dependence.<sup>44</sup> Bupropion is a dopamine and norepinephrine re-uptake inhibitor that has been used to treat nicotine dependence, depression, and seasonal affective disorder.<sup>45</sup>

Bupropion has been investigated as monotherapy for weight loss, its effect is believed to be due in part to a combined dopaminergic and noradrenergic effect on POMC signaling.<sup>46</sup> As expected as a single drug therapy it is been associated with modest weight loss in clinical studies.<sup>47-49</sup> The limited efficacy of bupropion monotherapy was in part

explained with the novel finding that POMC stimulation also initiates an opioid-mediated auto-inhibition pathway.<sup>17</sup> It was this novel finding that led to the concept of adding naltrexone, a  $\mu$ -opioid receptor antagonist, which therefore slows down this auto-inhibition mechanism. By combining naltrexone with bupropion it would be possible to sustain POMC activation, leading to more weight loss than with bupropion alone.<sup>50</sup> Selective antagonism of the  $\mu$ -opioid receptor has also been associated with reducing the motivational properties of stimuli that elicit the binge eating commonly associated with obesity.<sup>51</sup> Animal studies have shown that naltrexone influences neural reward pathways and hedonic eating behavior.<sup>52</sup> Because naltrexone does not have a direct and independent effect on hypothalamic control of energy balance (i.e., naltrexone attenuates autoinhibition in response to increased POMC activity), naltrexone by itself has failed to produce consistent or clinically meaningful weight loss when administered as monotherapy.<sup>53,54</sup>

It is believed that in addition to stimulation of POMC neurons, the NB combination regulates the mesolimbic dopaminergic reward pathways, which may lead to further weight reduction by modulating reward values and goal-oriented behaviors.<sup>50,55</sup> Preclinical studies have shown that direct administration of naltrexone and bupropion into the reward system results in a synergistic reduction in food intake,<sup>56</sup> suggesting that the two drugs have complementary actions in the reward system.

**Clinical Studies—Effect on Weight Loss and Cardiometabolic Risk Factors**

An important phase II dose-ranging study that led to phase III dose selection demonstrated that the NB combination was synergistic and more effective than the individual components.<sup>57</sup> In this study of the NB combination (16 [NB 16], 32 [NB 32], or 48 [NB 48] mg/day naltrexone with 400 mg/day bupropion), weight loss in the completer population at week 24 was -7.6 % for NB 16, -7.1 % for NB 32, -7.5 % for NB 48, and -1.1 % for placebo. At week 24, the weight loss of the combination was greater than the sum of the weight loss resulting from the individual components as monotherapy. The trajectory of weight loss was also sustained to week 48, in contrast to the plateau at week 24 observed with monotherapies (see Figure 2).<sup>56</sup>

The Contrave Obesity Research (COR) phase III clinical trial program investigated the efficacy and safety of NB in approximately 4,500 participants and comprised four studies, which are summarized in Table 1 and Figure 3.<sup>58-61</sup> These studies demonstrated that weight loss with NB was seen as early as week 4 and was sustained for at least 56 weeks. In COR-I, bupropion sustained-release (360 mg/day) combined with naltrexone sustained-release 32 mg/day (NB 32) or 16 mg/day (NB 16) were compared with placebo.<sup>58</sup> The mean change in body weight

among study completers was -1.8 % in the placebo group, -8.1 % in the naltrexone 32 mg plus bupropion group ( $p < 0.0001$  versus placebo), and -6.7 % in the naltrexone 16 mg plus bupropion group ( $p < 0.0001$  versus placebo). In COR-II, subjects who did not maintain 5 % weight loss were re-randomized to NB 32 or a higher naltrexone dose of 48 mg/day (NB 48).<sup>59</sup> However, NB 48 did not result in additional weight loss, and it was concluded that 32 mg was the maximum effective dose. The COR-behavior modification (BMOD) study combined NB 32 or placebo with an intensive BMOD program that was delivered by registered dietitians, behavioral psychologists, or exercise specialists. The NB 32 group with intensive behavior modification achieved a weight loss of 11.5 %, a significantly greater ( $p < 0.001$ ) weight loss than was seen in the BMOD plus placebo group (7.3 %).<sup>60</sup>

Treatment of obese patients with diabetes is particularly challenging as many therapies for diabetes lead to weight gain.<sup>62</sup> COR-Diabetes Mellitus (COR-DM) recruited patients with type 2 diabetes who were either not taking diabetes medication or who were taking a stable daily dose of oral antidiabetic agents (OADs: sulfonylurea, thiazolidinedione, metformin, dipeptidyl peptidase-4 [DPP4] inhibitors). NB 32 produced a greater weight loss compared with placebo.<sup>61</sup> The lower weight loss compared with other COR trials is not surprising: weight loss in patients with diabetes taking OADs is typically lower than weight loss observed in patients without diabetes because some OADs promote weight gain. The weight loss was associated with improvements in glycemic control. NB resulted in significantly greater glycated hemoglobin (HbA<sub>1c</sub>) reduction (-0.6 versus -0.1 %;  $p < 0.001$ ) and percentage of patients achieving HbA<sub>1c</sub> < 7 % (44.1 versus 26.3 %;  $p < 0.001$ ). In addition to the HbA<sub>1c</sub> changes observed in COR-DM, major secondary endpoints describing cardiovascular and metabolic risk factors, including waist circumference, visceral fat, high-density lipoprotein (HDL) cholesterol, and triglycerides, were met across all COR trials.

QoL was assessed in the COR trials. An integrated analysis of data from all four trials shows that NB resulted in significantly greater improvement in Impact of Weight on Quality of Life-Lite (IWQOL-Lite) total score (+11.9±0.3 versus +8.2±0.3 placebo;  $p < 0.001$ ) and all subscores (physical function, self-esteem, sexual life, public distress, work; all  $p < 0.05$  versus placebo).<sup>63</sup> These improvements were observed as early as week 8.<sup>58-60</sup>

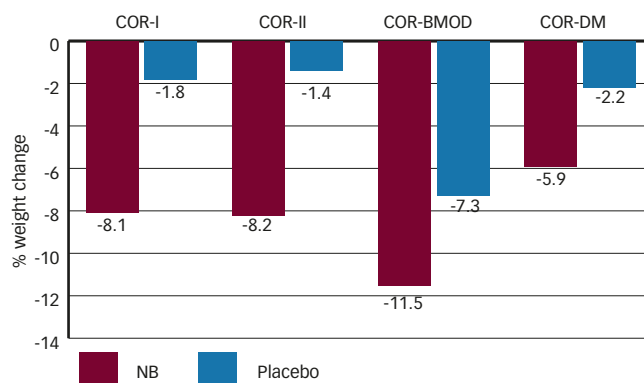
### Clinical Studies—Effect on Eating Behavior

In addition to measures of weight loss, and cardiovascular and metabolic risk each of the COR studies had secondary endpoints of assessment of eating behavior through use of the Control of Eating Questionnaire (CoEQ), a behavioral measure instrument.<sup>64</sup> An analysis of all COR studies showed that NB was associated with a significant improvement in a number of CoEQ items related to control of eating and cravings (see Figure 4).<sup>30</sup> Specifically, there was a significant improvement relative to placebo in response to the following questions:

- How hungry have you felt?
- During the last 7 days how often have you had food cravings?
- How strong have any food cravings been?
- How difficult has it been to resist any food cravings?
- Generally, how difficult has it been to control your eating?

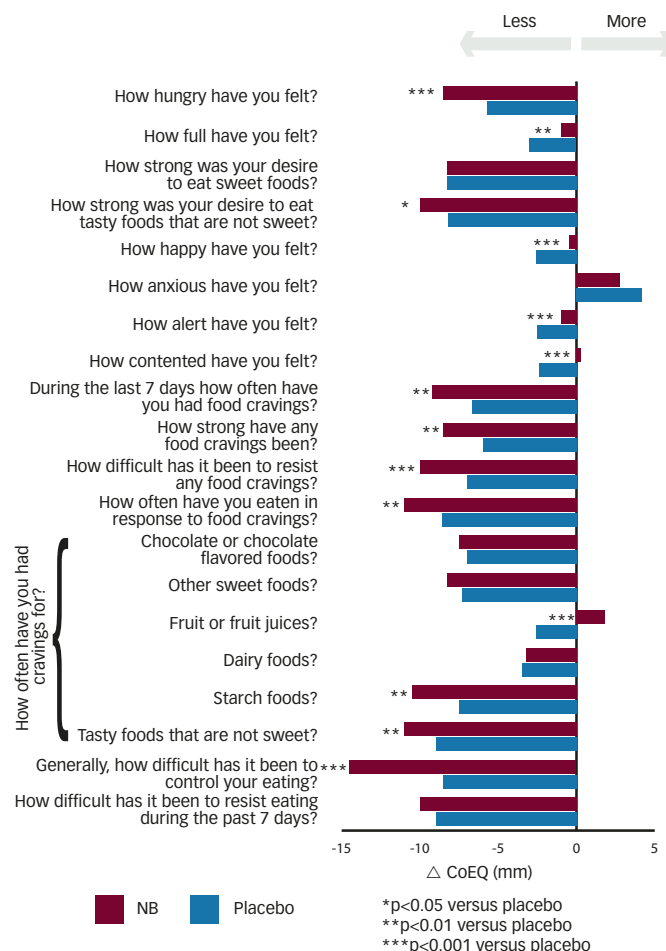
In addition, there was a correlation between ability to control eating and weight loss. Individuals who reported greater ability to control their eating at week 8 had greater weight loss at week 56.<sup>30</sup> In a separate

**Figure 3: Effect of Sustained-release Naltrexone/Bupropion on Weight Loss—The Contrave Obesity Research Trials (Completers)**



BMOD = behavior modification; COR = Contrave Obesity Research; DM = diabetes mellitus; NB = sustained-release naltrexone/bupropion. Sources: Greenway et al. 2010,<sup>58</sup> Wadden et al. 2011,<sup>59</sup> Apovian et al. 2013,<sup>60</sup> and Hollander et al. 2013.<sup>61</sup>

**Figure 4: Effect of Sustained-release Naltrexone/Bupropion on Eating Behavior**



Responses to the Control of Eating Questionnaire (CoEQ): a combined analysis of the Contrave Obesity Research (COR) trials. NB = sustained-release naltrexone/bupropion. Source: Fujioka et al. 2013.<sup>30</sup>

study of 40 obese women, functional magnetic resonance imaging (fMRI) demonstrated that NB 32 decreased hypothalamic reactivity to food cues while enhancing the activation of regions involved in self-control and internal awareness.<sup>65</sup>

## Clinical Studies—Safety and Tolerability

The most common ( $\geq 10\%$ ) treatment-emergent adverse events associated with NB were: nausea (32 % NB versus 7 % placebo), constipation (19 % NB versus 7 % placebo), headache (18 % NB versus 10 % placebo), and vomiting (11 % NB versus 3 % placebo).<sup>66</sup> These were primarily mild to moderate in severity, occurred early in the treatment course, and did not lead to treatment discontinuation in the majority of patients.<sup>58–61</sup> Nausea led to treatment discontinuation in 6.3 %, 6.0 %, 4.6 %, and 9.6 % in COR-I, COR-II, COR-BMOD, and COR-DM, respectively. The incidence of subjects with serious adverse events was low ( $\leq 1.6\%$ ) in all trials (the highest rates reported were 3.9 % for NB and 4.7 % for placebo in COR-DM).<sup>61</sup>

Bupropion is an antidepressant and has been associated with rare occurrences of psychiatric symptoms during treatment and after drug cessation.<sup>67</sup> The COR clinical trials therefore assessed psychiatric symptoms. To date, no difference in psychiatric adverse events or depressive and anxiety symptoms has been reported between NB and placebo, and no episodes of suicidal ideation have been reported in treatment groups. No clear evidence of teratogenicity has been associated with the use of NB.

NB 32 was associated with an attenuation in the typical improvements in systolic and diastolic blood pressure associated with weight loss by approximately 1 mmHg.<sup>58–61</sup> These are typical pharmacologic responses of bupropion. An ongoing clinical trial, the Light study, is being conducted under a US Food and Drug Administration (FDA) Special Protocol Assessment and is designed to assess the occurrence of major adverse cardiovascular events in subjects treated with NB or placebo.<sup>68</sup> A prespecified interim analysis of this trial has shown that NB has met one of the safety goals specified by the FDA.<sup>69</sup>

## Other Clinical Studies

Bupropion is an antidepressant and smoking cessation agent. In an open-label trial, NB was associated with smoking cessation in the absence of weight gain, typically observed with other smoking cessation treatments, in overweight and obese individuals.<sup>70</sup> Improvements in symptoms of

depression in overweight and obese women with major depressive disorder were observed in a separate open-label clinical trial.<sup>71</sup> These effects warrant further investigation.

With diet and exercise, weight loss is primarily due to a reduction in adipose tissue, and not lean mass. A recent analysis of phase II study data<sup>57</sup> investigated the effect of NB on body composition and visceral body fat (VAT) mass. At 24 weeks, NB resulted in significant reductions in VAT mass compared with placebo ( $-15.0\%$  versus  $-4.6\%$ ;  $p < 0.001$ ).<sup>72</sup> Importantly, overall weight loss was primarily (78 %) the result of loss of adipose tissue, which is similar to the pattern of weight loss observed with diet and exercise.

## Summary and Concluding Remarks

The unmet need of pharmacologic treatment of obesity is slowly changing and physicians will have multiple new pharmacologic treatment options. The timing of this could not be better in the face of our current obesity pandemic and its consequences on health and health care budgets. Obesity has many causes and one well-studied aspect is food overconsumption driven by sensitivity to food stimuli and the pleasure derived from eating. These processes should be effective targets for pharmacotherapy.

NB represents a novel approach that may influence both the hypothalamic control of energy balance and the mesolimbic reward system. This dual mechanism of action will have its place in treatment of the obese patient. Of interest is that this medication may have advantages in patients struggling with craving and overconsumption related to using food as reward.

The weight loss achieved with NB is significant and sustained with an acceptable safety and tolerability profile. Clinical studies have demonstrated that the drug will yield optimal results when combined with lifestyle modifications involving decreased food intake together with increased physical activity. NB therefore represents a new and welcomed pharmacologic option for patients and physicians. ■

- Narkiewicz K, Obesity and hypertension—the issue is more complex than we thought, *Nephrol Dial Transplant*, 2006;21:264–7.
- Wilson PW, D'Agostino RB, Sullivan L, et al., Overweight and obesity as determinants of cardiovascular risk: the Framingham experience, *Arch Intern Med*, 2002;162:1867–72.
- Rodbard HW, Bays HE, Gavin JR, 3rd, et al., Rate and risk predictors for development of self-reported type-2 diabetes mellitus over a 5-year period: the SHIELD study, *Int J Clin Pract*, 2012;66:684–91.
- Chan JM, Rimm EB, Colditz GA, et al., Obesity, fat distribution, and weight gain as risk factors for clinical diabetes in men, *Diabetes Care*, 1994;17:961–9.
- Katsiki N, Ntaios G, Vemmos K, Stroke, obesity and gender: a review of the literature, *Maturitas*, 2011;69:239–43.
- Renehan AG, Tyson M, Egger M, et al., Body-mass index and incidence of cancer: a systematic review and meta-analysis of prospective observational studies, *Lancet*, 2008;371:569–78.
- Anandacoomarasamy A, Caterson ID, Leibman S, et al., Influence of BMI on health-related quality of life: comparison between an obese adult cohort and age-matched population norms, *Obesity (Silver Spring)*, 2009;17:2114–8.
- Olshansky SJ, Passaro DJ, Hershow RC, et al., A potential decline in life expectancy in the United States in the 21st century, *N Engl J Med*, 2005;352:1138–45.
- Wang YC, McPherson K, Marsh T, et al., Health and economic burden of the projected obesity trends in the USA and the UK, *Lancet*, 2011;378:815–25.
- Finkelstein EA, Khavjou OA, Thompson H, et al., Obesity and severe obesity forecasts through 2030, *Am J Prev Med*, 2012;42:563–70.
- Miller ER, 3rd, Erlinger TP, Young DR, et al., Results of the Diet, Exercise, and Weight Loss Intervention Trial (DEW-LT), *Hypertension*, 2002;40:612–8.
- Pi-Sunyer FX, A review of long-term studies evaluating the efficacy of weight loss in ameliorating disorders associated with obesity, *Clin Ther*, 1996;18:1006–35; discussion 5.
- Plourde G, Treating obesity. Lost cause or new opportunity? *Can Fam Physician*, 2000;46:1806–13.
- Case CC, Jones PH, Nelson K, et al., Impact of weight loss on the metabolic syndrome, *Diabetes Obes Metab*, 2002;4:407–14.
- Truong KD, Sturm R, Weight gain trends across sociodemographic groups in the United States, *Am J Public Health*, 2005;95:1602–6.
- Cohen DA, Neurophysiological pathways to obesity: below awareness and beyond individual control, *Diabetes*, 2008;57:1768–73.
- Cone RD, Anatomy and regulation of the central melanocortin system, *Nat Neurosci*, 2005;8:571–8.
- Cowley MA, Cone R, Enrietti P, et al., Electrophysiological actions of peripheral hormones on melanocortin neurons, *Ann N Y Acad Sci*, 2003;994:175–86.
- Morton GM, Cummings DE, Baskin DG, et al., Central nervous system control of food intake and body weight, *Nature*, 2006;443:289–95.
- Saper CB, Chou TC, Elmquist JK, The need to feed: homeostatic and hedonic control of eating, *Neuron*, 2002;36:199–211.
- Reece AS, Hypothalamic opioid-melanocortin appetitive balance and addictive craving, *Med Hypotheses*, 2011;76:132–7.
- Pandit R, de Jong JW, Vanderschuren LJ, et al., Neurobiology of overeating and obesity: the role of melanocortins and beyond, *Eur J Pharmacol*, 2011;660:28–42.
- Berridge KC, The debate over dopamine's role in reward: the case for incentive salience, *Psychopharmacology (Berl)*, 2007;191:391–431.
- Kelley AE, Ventral striatal control of appetitive motivation: role in ingestive behavior and reward-related learning, *Neurosci Biobehav Rev*, 2004;27:765–76.
- Olszewski PK, Shaw TJ, Grace MK, et al., Complexity of neural mechanisms underlying overconsumption of sugar in scheduled feeding: involvement of opioids, orexin, oxytocin and NPY, *Peptides*, 2009;30:226–33.
- Levine AS, Billington CJ, Opioids as agents of reward-related feeding: a consideration of the evidence, *Physiol Behav*, 2004;82:57–61.
- Kelley AE, Bakshi VP, Haber SN, et al., Opioid modulation of taste hedonics within the ventral striatum, *Physiol Behav*, 2002;76:365–77.
- Zheng H, Patterson LM, Berthoud HR, Orexin signaling in the ventral tegmental area is required for high-fat appetite induced by opioid stimulation of the nucleus accumbens, *J Neurosci*, 2007;27:11075–82.
- Kirkham TC, Endocannabinoids and the non-homeostatic control of appetite, *Curr Top Behav Neurosci*, 2009;1:231–53.
- Fujioka K, Burns C, Walsh B, et al., Early improvement in control of eating is associated with long-term weight loss – integrated analysis of four phase 3 trials of combination naltrexone/bupropion treatment. Presented at the American Diabetes Association (ADA) 73rd Scientific Sessions, June 21–25, 2013; Chicago, IL, US; abstract no 1149-P, 2013.
- Stice E, Spoor S, Ng J, et al., Relation of obesity to consummatory and anticipatory food reward, *Physiol Behav*, 2009;97:551–60.
- Small DM, Individual differences in the neurophysiology of reward and the obesity epidemic, *Int J Obes (Lond)*, 2009;33(Suppl. 2):S44–8.
- Jastreboff AM, Sinha R, Lacadie C, et al., Neural correlates of stress- and food cue-induced food craving in obesity: association with insulin levels, *Diabetes Care*, 2013;36:394–402.
- Martin LE, Holsten LM, Chambers RJ, et al., Neural mechanisms associated with food motivation in obese and healthy weight adults, *Obesity (Silver Spring)*, 2010;18:254–60.
- Stice E, Spoor S, Bohon C, et al., Relation of reward from food intake and anticipated food intake to obesity: a functional magnetic resonance imaging study, *J Abnorm Psychol*, 2008;117:924–35.
- Del Parigi A, Gautier JF, Chen K, et al., Neuroimaging and obesity: mapping the brain responses to hunger and satiation in humans using positron emission tomography, *Ann N Y Acad Sci*, 2002;967:389–97.
- Volkow ND, Wang GJ, Baler RD, Reward, dopamine and the control of food intake: implications for obesity, *Trends Cogn Sci*, 2011;15:37–46.
- Rothmund Y, Preuschhof C, Bohner G, et al., Differential

- activation of the dorsal striatum by high-calorie visual food stimuli in obese individuals, *Neuroimage*, 2007;37:410–21.
39. Stoeckel LE, Weller RE, Cook EW 3rd, et al., Widespread reward-system activation in obese women in response to pictures of high-calorie foods, *Neuroimage*, 2008;41:636–47.
  40. Del Parigi A, Chen K, Salbe AD, et al., Persistence of abnormal neural responses to a meal in postobese individuals, *Int J Obes Relat Metab Disord*, 2004;28:370–7.
  41. Hinkle W, Cordell M, Leibel R, et al., Effects of reduced weight maintenance and leptin repletion on functional connectivity of the hypothalamus in obese humans, *PLoS One*, 2013;8:e59114.
  42. Chechlacz M, Rotshstein P, Klamer S, et al., Diabetes dietary management alters responses to food pictures in brain regions associated with motivation and emotion: a functional magnetic resonance imaging study, *Diabetologia*, 2009;52:524–33.
  43. Billes SK, Greenway FL, Combination therapy with naltrexone and bupropion for obesity, *Expert Opin Pharmacother*, 2011;12:1813–26.
  44. Bouza C, Angeles M, Munoz A, et al., Efficacy and safety of naltrexone and acamprosate in the treatment of alcohol dependence: a systematic review, *Addiction*, 2004;99:811–28.
  45. Gadde KM, Xiong GL, Bupropion for weight reduction, *Expert Rev Neurother*, 2007;7:17–24.
  46. Billes SK, Cowley MA, Inhibition of dopamine and norepinephrine reuptake produces additive effects on energy balance in lean and obese mice, *Neuropsychopharmacology*, 2007;32:822–34.
  47. Anderson JW, Greenway FL, Fujioka K, et al., Bupropion SR enhances weight loss: a 48-week double-blind, placebo-controlled trial, *Obes Res*, 2002;10:633–41.
  48. Jain AK, Kaplan RA, Gadde KM, et al., Bupropion SR vs. placebo for weight loss in obese patients with depressive symptoms, *Obes Res*, 2002;10:1049–56.
  49. Gadde KM, Parker CB, Maner LG, et al., Bupropion for weight loss: an investigation of efficacy and tolerability in overweight and obese women, *Obes Res*, 2001;9:544–51.
  50. Greenway FL, Whitehouse MJ, Guttadauria M, et al., Rational design of a combination medication for the treatment of obesity, *Obesity (Silver Spring)*, 2009;17:30–9.
  51. Giuliano C, Robbins TW, Nathan PJ, et al., Inhibition of opioid transmission at the mu-opioid receptor prevents both food seeking and binge-like eating, *Neuropsychopharmacology*, 2012;37:2643–52.
  52. Taber MT, Zernig G, Fibiger HC, Opioid receptor modulation of feeding-evoked dopamine release in the rat nucleus accumbens, *Brain Res*, 1998;785:24–30.
  53. Maggio CA, Presta E, Bracco EF, et al., Naltrexone and human eating behavior: a dose-ranging inpatient trial in moderately obese men, *Brain Res Bull*, 1985;14:657–61.
  54. Malcolm R, O'Neil PM, Sexauer JD, et al., A controlled trial of naltrexone in obese humans, *Int J Obes*, 1985;9:347–53.
  55. Billes SK, Sinnayah P, Cowley MA, Naltrexone/bupropion for obesity: An investigational combination pharmacotherapy for weight loss, *Pharmacol Res*, 2014;84C:1–11.
  56. Sinnayah P, Wallingford NM, Evans AE, et al., Bupropion and naltrexone interact synergistically to decrease food intake in mice, *Obesity (Silver Spring)*, 2007;15:A179.
  57. Greenway FL, Dunayevich E, Tollefson G, et al., Comparison of combined bupropion and naltrexone therapy for obesity with monotherapy and placebo, *J Clin Endocrinol Metab*, 2009;94:4898–906.
  58. Greenway FL, Fujioka K, Plodkowski RA, et al., Effect of naltrexone plus bupropion on weight loss in overweight and obese adults (COR-I): a multicentre, randomised, double-blind, placebo-controlled, phase 3 trial, *Lancet*, 2010;376:595–605.
  59. Wadden TA, Foreyt JP, Foster GD, et al., Weight loss with naltrexone SR/bupropion SR combination therapy as an adjunct to behavior modification: the COR-BMOD trial, *Obesity (Silver Spring)*, 2011;19:110–20.
  60. Apovian CM, Aronne L, Rubino D, et al., A randomized, phase 3 trial of naltrexone SR/bupropion SR on weight and obesity-related risk factors (COR-II), *Obesity (Silver Spring)*, 2013;21:935–43.
  61. Hollander P, Gupta AK, Plodkowski R, et al., Effects of naltrexone sustained-release/bupropion sustained-release combination therapy on body weight and glycemic parameters in overweight and obese patients with type 2 diabetes, *Diabetes Care*, 2013;36:4022–9.
  62. Kenkre J, Tan T, Bloom S, Treating the obese diabetic, *Expert Rev Clin Pharmacol*, 2013;6:171–83.
  63. Kolotkin RL, Burns C, Walsh B, et al., Combination naltrexone/bupropion therapy resulted in clinically meaningful improvements in weight and quality of life (QoL) – integrated analysis of four Phase 3 trials; presented at the American Diabetes Association 73rd Scientific Session, June 21–25; Chicago, IL, US; abstract no 2013-A-2723.
  64. Flint A, Raben A, Blundell JE, et al., Reproducibility, power and validity of visual analogue scales in assessment of appetite sensations in single test meal studies, *Int J Obes Relat Metab Disord*, 2000;24:38–48.
  65. Wang GJ, Tomasi D, Volkow ND, et al., Effect of combined naltrexone and bupropion therapy on the brain's reactivity to food cues, *Int J Obes (Lond)*, 2014;38:682–8.
  66. Apovian C, Burns C, Walsh B, et al., An integrated analysis of weight loss with combination naltrexone/bupropion therapy by BMI (abesity) classification; presented at the American Diabetes Association 73rd scientific session, June 21–25, 2013, Chicago, IL, US; abstract no 1013-A-273B.
  67. GSK, Wellbutrin; highlights of prescribing information. Available at: <http://www.gsksource.com/gskprm/htdocs/documents/WELLBUTRIN-SR-PI-MG.PDF> (accessed April 30, 2014).
  68. <http://clinicaltrials.gov/ct2/show/NCT01601704?term=contrave&rank=3>, Cardiovascular Outcomes Study of Naltrexone SR/Bupropion SR in Overweight and Obese Subjects With Cardiovascular Risk Factors (The Light Study). Available at: <http://clinicaltrials.gov/ct2/show/NCT01601704?term=contrave&rank=3> (accessed March 19, 2014).
  69. Orexigen, Orexigen announces successful interim analysis of contrave Light Study, 25 Nov 2013. Available at: <http://ir.orexigen.com/phoenix.zhtml?c=207034&p=irol-newsArticle&ID=1879629&highlight=> (accessed March 20, 2014).
  70. Wilcox CS, Oskooilar N, Erickson JS, et al., An open-label study of naltrexone and bupropion combination therapy for smoking cessation in overweight and obese subjects, *Addict Behav*, 2010;35:229–34.
  71. McElroy SL, Guerdjikova AI, Kim DD, et al., Naltrexone/Bupropion combination therapy in overweight or obese patients with major depressive disorder: results of a pilot study, *Prim Care Companion CNS Disord*, 2013;15(3). pii: PCC.12m01494.
  72. Smith SR, Fujioka K, Gupta AK, et al., Combination therapy with naltrexone and bupropion for obesity reduces total and visceral adiposity, *Diabetes Obes Metab*, 2013;15:863–6.